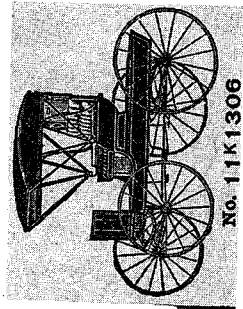
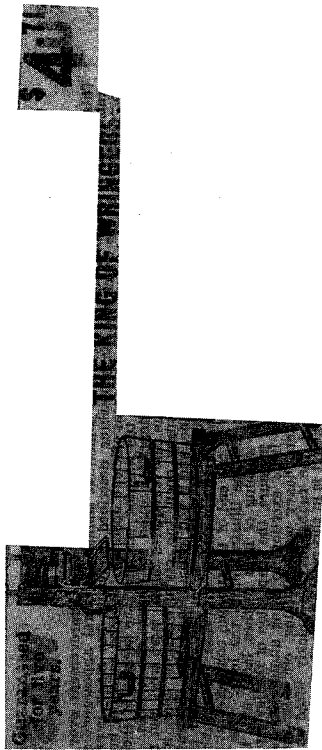


- Shastko 821
- Shulski 822
- Shumilak 823
- Sigurdson 828
- Sjoberg 828
- Skehar 829
- Skrypetz 830
- Skrypnyk 831
- Slipec 833
- Smiley 835
- Smoley 836
- Smolinski 837
- Smorang 837
- Sokolowski 838
- Solnik 838
- Sopko 839
- Sozanski 841
- Spence 842
- Spreen 842
- Starodub 842
- Stasiuk 847
- Stefaniuk 848
- Steinke 849
- Sternat 850
- Stevens 851
- Strycharz 852
- Stubel 853
- Sul 854
- Sullivan 856
- Swan 861
- Szydluk 861
- Taylor 862
- Tepleski 865
- Teplyske 866
- Thomas 866
- Tomczak 875
- Tomko 875
- Thompson 876
- Topolowski 876
- Topor 876
- Tymo 877
- Typliski 878
- Uskiw 878
- Van Hartevelt 885
- Verheul 930
- Wachal 887
- Wakshinski 890
- Wallace 890
- Vanag 891



No. 11K1306

**\$35.95**



**24<sup>c</sup> PER 100**  
**FOR SMOKELESS POWDER 22-CALIBER CARTRIDGES**

- Wardrop 892
- Warrenchuk 893
- Wasylyk 894
- Wasylik 895
- Watko 897
- Waytiuk 899
- Wentland 902
- Wesley 902
- Winger 903
- Williams 904
- Wiess 905
- Wolanchuk 931
- Wood 905
- Woodward 907
- Wusaty 908
- Wuzinski 909
- Yakimovich 910
- Yokimas 911
- Young 912
- Yule 912
- Zabogruski 913
- Zahayko 915
- Zapototsky 918
- Zarichney 919
- Zaversnuke 919
- Zebinski 920
- Zegil 921
- Zeilig 921
- Zirk 922
- Zorniak 923
- Zyblock 923

**50c GRAY STRIPED DUCK APRON OVERALLS.**  
 No. 41K720 Very neat pattern gray striped duck, has all the appearance of a gray cottonade and material will stand wear, are of the regular carpenter pattern, large apron, one front, one back and one lower pocket, cut full size, all vital points reinforced, patent buttons, all seams are double sewed and felled, impossible to rip; suspenders of same material with 8-inch elastic end, metal cross piece and cord ends.

**GRAY STRIPE**

**\$1.96 KENWOOD "EASY" CULTIVATOR, FLOW, HOE AND RAKE.**

**YOU SAVE MONEY**  
 When you buy of us at our LOW PRICES.

**\$1.96**

**41C LONG HANDLE PLAIN FERRULE CRUCIBLE STEEL MANURE FORK.**  
 We are not in the farming tool trust which accounts for our low prices. These goods are guaranteed to last for 10 months long. 4 1/2 foot handles.

**THESE PRICES SAVE YOU MONEY.**

**46C 8 HANDLE PLAIN FERRULE 4-TINE CRUCIBLE STEEL MANURE FORK.**

**44C FOR A FULL SIZE CRUCIBLE STEEL 4-TINE MANURE HOOK.**

## BEACONIA

*submitted by Vera Thomas*

Beaconia wasn't always the way it is today. At the end of the summer season when the cottage owners go back it's empty. When I was a child in the 1930's and 1940's even in the 1950's, it was a pretty busy place. We had four stores, Albert Trapp had a small store and the P.O., then there was Steve Lesosky's, Alex Kirk's, and Pete Kutchy's, each of them made a very good living.

The main sort of living here was cutting wood, fishing, and small farming. Wood cutting really was done the most. They cut the wood in four foot cords, hauled it here to Beaconia with horses, and loaded it into boxcars.

The one room Beaconia School House had a population of up to 52 school children. That school burnt down in 1949. A new one was built the same year, and was used until the area was consolidated I believe in 1968.

In Oct., 1947 Trapp's sold out to Jack Zirk who still runs the store and the P.O. The first P.O. was opened on Aug. 8, 1921 by Albert Trapp. They left in Sept. 1970. It is now just a P.O., run by Ed and Lila Smith.

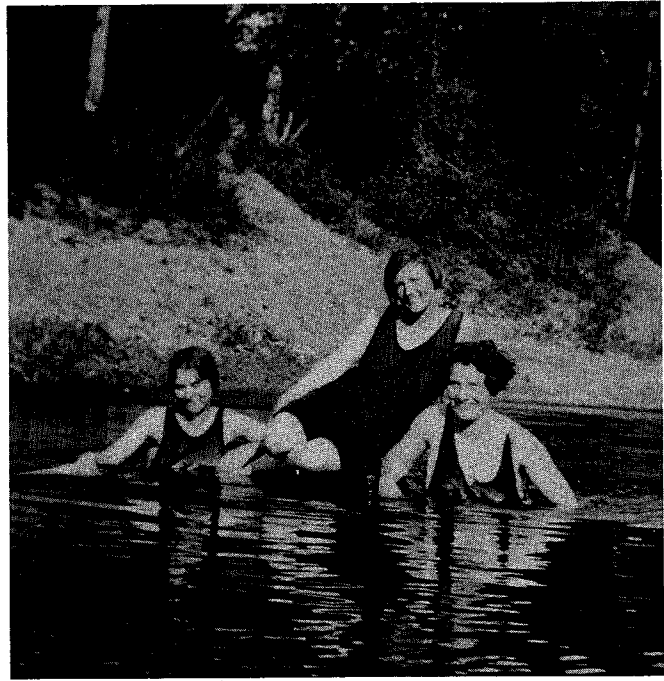
The Lesosky's left in 1949 or 50, the store was empty, then used on and off for a few years, finally being torn down. The Kirks left in 1952 or 1953, the store was then run by Leo Zirk for awhile. They left and it was turned into a living home by Stanley Thomas. They lived there for years, then they sold it to Howard Thomas who used it as a summer place. Then in the 1970's Earl Thomas bought it. By this time it had pretty well seen its better days, so it was torn down too.

Now the only remaining store is the Pete Kutchy Store. Over the years he had remodeled it and it is now quite a modern store. The Lakeland Restaurant was opened in 1947 and closed in 1950. By this time Beaconia was slowly turning into a summer place. Land was starting to be sold to city people. Cottages were being built and by the 1970's, it was mainly known as a summer resort, as it is today.

Most of our young people go away to look for work, as here we have nothing to give them. It's really sad to see a place that was full of homes and people at one time, now just a hand full of houses and very few people left.



*Fred Trapp at Beaconia Gas Pump.*



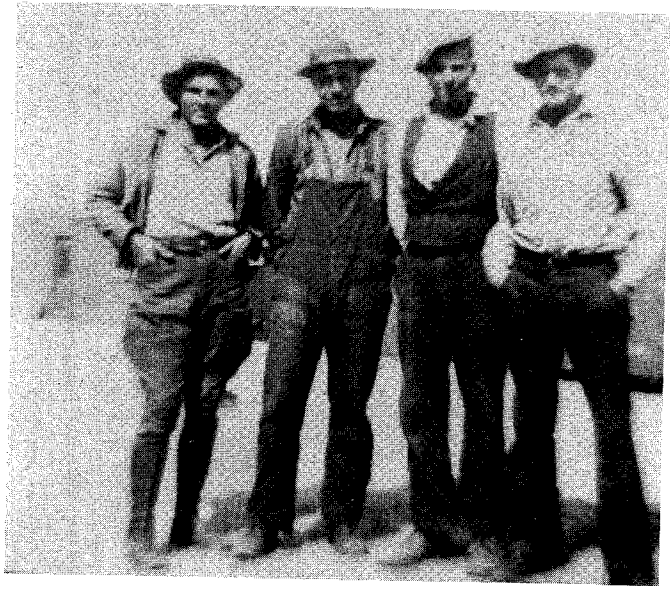
*Doris and Nettie Homenick in Red River.*



*Rowing on Ducharmes Creek in Narol.*

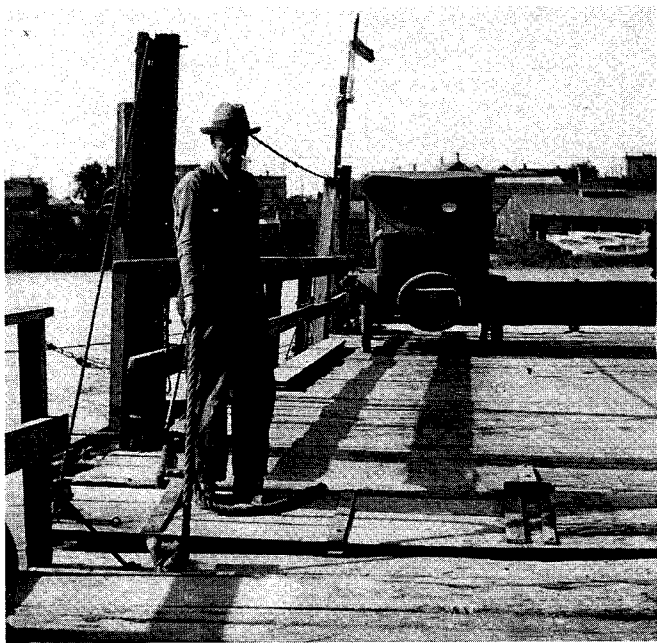


*Rowing to the Island in Goron - Anne Homenick.*

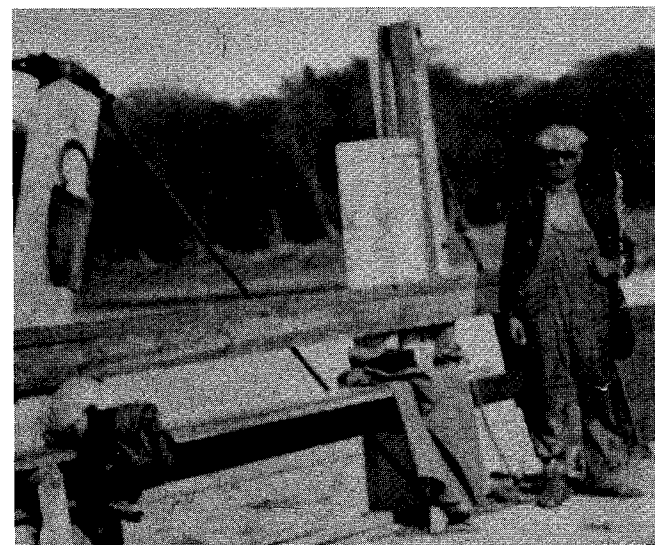
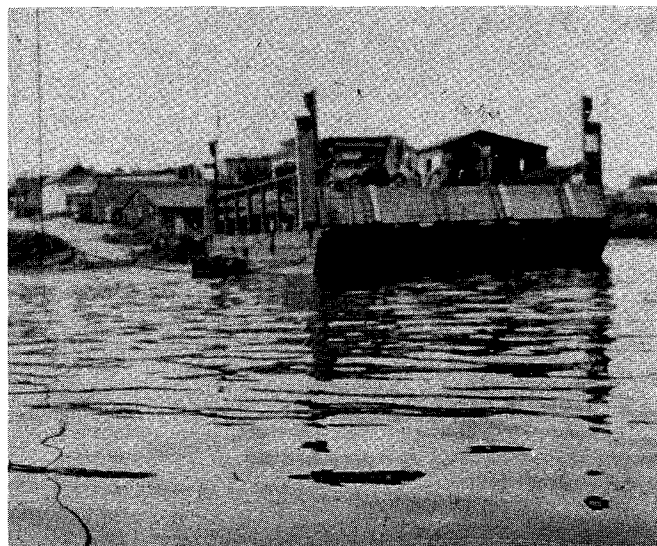


*East Selkirk Romeo's.*

*aaah!  
Those were the days ...*



*Left to Right: Eva Baldwin, Ferryman and Lily Larson.*



*Mr. Wasyl Kologinski on the Ferry.*



*Fred Kordalchuk at the East Selkirk Ferry Dock.*



*Gordon Burnett running the Selkirk Ferry, 1928 to 1930.*



Our River Lots, Showing Gunn's Creek Drain



Lockport Corner, East Approach